

TP-XCAMTOP4K8MPA



The XCAMTOP4K series camera is the next-generation live-view imaging-system with 4K resolution(Video) at 30 FPS. It comes with Sony Exmor CMOS sensor with high sensitivity, low dark current and no smear achieved through the adoption of R, G and B primary colour mosaic filters.

Multiple outputs of HDMI, USB,LAN, and Wifi with USB LAN dongle

Standard C mount with image capture on board using HDMI screento accessory SD card or USB stick

Part No.	Sensor	Pixel(μm)	G Sensitivity Dark signal	FPS/ Resolution	Binning	Exposure
XCAMTOP4K8MPA	4K/Sony IMX334(C) 1/1.8"(7.68x4.32)	2.0x2.0	505 mv with 1/30s 0.13 mv with 1/30s	30@3840x2160(HDMI) 30@3840x2160(NETWORK) 30@3840x2160(USB)	1x1	0.04ms- 1000ms
XCAMTOP4K8MPB	Sony IMX485(C) 1/1.2"(11.14x6.26)	2.9x2.9	2188mv with 1/30s 0.39mv with 1/30s	30@3840*2160(HDMI) 30@3840*2160(NETWORK) 30@3840*2160(USB)	1x1	0.04ms- 1000ms

Interface or Button	Function Description
USB Mouse	Connect USB mouse for easy operation with embedded XCamView software
USB2.0	Connect USB flash drive to save pictures and videos
	Connect 5G WLAN module to transfer video wirelessly in real time
USB Video	Connect PC or other host device to realize video image transmission
HDMI	Comply with HDMI1.4 standard. 4K/1080P format video output and supporting automatic switch between 4K and 1080P format according to the connected monitors
LAN	LAN port to connect router and switch to transfer video
SD	Comply with SDIO3.0 standard and SD card could be inserted for video and images saving

ON/OFF	Power switch
LED	LED status indicator
DC12V	Power adapter connection (12V/1A)
Video Output Interface	Function Description
HDMI Interface	Comply with HDMI1.4 standard 30fps@4K or 30fps@1080P
LAN Interface	support real time resolution switching(4K/1080P/720P) H264 encoded video DHCP configuration or manual configuration Unicast/multicast configuration
WLAN Interface	Connecting 5G WLAN adapter (USB2.0 slot) in AP/STA mode
USB Video Interface	Connecting USB Video port of PC for video transfer MJPEG format video
Other Function	Function Description
Video Saving	Video format : 8M(3840*2160) H264/H265 encoded MP4 file Video saving frame rate:30fps
Image Capture	8M (3840*2160) JPEG/TIFF image in SD card or USB flash drive
Measurement Saving	Measurement information saved in different layer with image content Measurement information is saved together with image content in burn in mode
ISP	Exposure(Automatic / Manual Exposure) / Gain, White Balance(Manual / Automatic / ROI Mode), Sharpening, 3D Denoise, Saturation Adjustment, Contrast Adjustment, Brightness Adjustment, Gamma Adjustment, Color to Gray, 50HZ/60HZ Anti-flicker Function
Image Operation	Zoom In/Zoom Out(Up to 10X), Mirror/Flip, Freeze, Cross Line, Compare(Comparison between real time video and images in SD card or USB flash drive), Embedded Files Browser, Video Playback, Measurement Function
Embedded RTC(Optional)	To support accurate time on board
Restore Factory Settings	Restore camera parameters to its factory status
Multiple Language Support	English / Simplified Chinese / Traditional Chinese / Korean / Thailand / French / German / Japanese / Italian / Russian
Software Environment under LAN/WLAN/USB Video Output	
White Balance	Auto White Balance
Color Technique	Ultra-Fine Color Engine
Capture/Control SDK	Windows/Linux/macOS/Android Multiple Platform SDK(Native C/C++, C#/VB.NET, Python, Java, DirectShow, Twain, etc)
Recording System	Still Picture or Movie
Operating System	Microsoft® Windows® XP / Vista / 7 / 8 / 8.1 /10(32 & 64 bit) OSx(Mac OS X) Linux
PC Requirements	CPU: Equal to Intel Core2 2.8GHz or Higher Memory: 4GB or More Ethernet Port: RJ45 Ethernet Port Display:19" or Larger CD-ROM
Operating Environment	
Operating Temperature	-10°~ 50°C
Storage Temperature	-20°~ 60°C

Operating Humidity	30~80%RH
Storage Humidity	10~60%RH
Power Supply	DC 12V/1A Adapter

Potential Application

- Scientific research, education (teaching, demonstration and academic exchanges);
- Digital laboratory, medical research;
- Industrial visual (PCB examination, IC quality control);
- Medical treatment (pathological observation);
- Food (microbial colony observation and counting);
- Aerospace, military (high sophisticated weapons);

Interface or Button	Function Description
USB Mouse	Connect USB mouse for easy operation with embedded XCamView software
USB2.0	Connect USB flash drive to save pictures and videos
	Connect 5G WLAN module to transfer video wirelessly in real time
USB Video	Connect PC or other host device to realize video image transmission
HDMI	Comply with HDMI1.4 standard. 4K/1080P format video output and supporting automatic switch between 4K and 1080P format according to the connected monitors
LAN	LAN port to connect router and switch to transfer video
SD	Comply with SDIO3.0 standard and SD card could be inserted for video and images saving
ON/OFF	Power switch
LED	LED status indicator
DC12V	Power adapter connection (12V/1A)
Video Output Interface	Function Description
HDMI Interface	Comply with HDMI1.4 standard
	30fps@4K or 30fps@1080P
LAN Interface	support real time resolution switching(4K/1080P/720P) H264 encoded video DHCP configuration or manual configuration Unicast/multicast configuration
WLAN Interface	Connecting 5G WLAN adapter (USB2.0 slot) in AP/STA mode

USB Video Interface	Connecting USB Video port of PC for video transfer
	MJPEG format video
Other Function	Function Description
Video Saving	Video format : 8M(3840*2160) H264/H265 encoded MP4 file Video saving frame rate:30fps
Image Capture	8M (3840*2160) JPEG/TIFF image in SD card or USB flash drive
Measurement Saving	Measurement information saved in different layer with image content Measurement information is saved together with image content in burn in mode
ISP	Exposure(Automatic / Manual Exposure) / Gain, White Balance(Manual / Automatic / ROI Mode), Sharpening, 3D Denoise, Saturation Adjustment, Contrast Adjustment, Brightness Adjustment, Gamma Adjustment, Color to Gray, 50HZ/60HZ Anti-flicker Function
Image Operation	Zoom In/Zoom Out(Up to 10X), Mirror/Flip, Freeze, Cross Line, Compare(Comparison between real time video and images in SD card or USB flash drive), Embedded Files Browser, Video Playback, Measurement Function
Embedded RTC(Optional)	To support accurate time on board
Restore Factory Settings	Restore camera parameters to its factory status
Multiple Language Support	English / Simplified Chinese / Traditional Chinese / Korean / Thailand / French / German / Japanese / Italian / Russian
Software Environment under LAN/WLAN/USB Video Output	
White Balance	Auto White Balance
Colour Technique	Ultra-Fine Colour Engine
Capture/Control SDK	Windows/Linux/macOS/Android Multiple Platform SDK(Native C/C++, C#/VB.NET, Python, Java, DirectShow, Twain, etc)
Recording System	Still Picture or Movie
Operating System	Microsoft® Windows® XP / Vista / 7 / 8 / 8.1 /10(32 & 64 bit)
	OSx(Mac OS X)

	Linux
PC Requirements	CPU: Equal to Intel Core2 2.8GHz or Higher
	Memory: 4GB or More
	Ethernet Port: RJ45 Ethernet Port
	Display:19" or Larger
	CD-ROM
Operating Environment	
Operating Temperature	-10°~ 50° C
Storage Temperature	-20°~ 60°C
Operating Humidity	30~80%RH
Storage Humidity	10~60%RH
Power Supply	DC 12V/1A Adapter

Potential Application

- Scientific research, education (teaching, demonstration and academic exchanges);
- Digital laboratory, medical research;
- Industrial visual (PCB examination, IC quality control);
- Medical treatment (pathological observation);
- Food (microbial colony observation and counting);
- Aerospace, military (high sophisticated weapons);

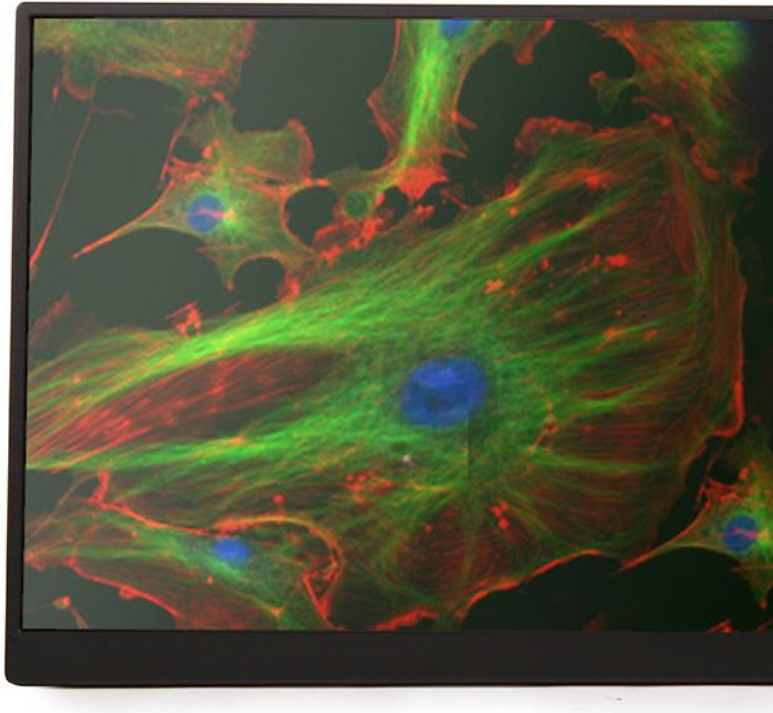
Note:

High resolution screens via HDMI both 2K or 4K may be attached to camera.

TP_HD4K133A's basic characteristic

TPHD4K133A is specially Designed for XCAM series 4K HDMI cameras, which can stream live 4K videos. The TPHD4K133A screen uses an IPS LCD screen (also known as a super TFT display) with a full viewing angle (close to 180 degrees) and high contrast characteristics.

Combining TPHD4K133A with XCAM series 4K HDMI cameras can build an integrated imaging and display system, which is flexible and intuitive. At the same time, TPHD4K133A's high-quality display features helps fully demonstrate the characteristics of XCAM series 4K HDMI cameras.



The TPHD4K133A's basic characteristic is as follows:

- 4K HDMI input display;
- IPS LCD screen;
- Hardware resolution 3840 x2160;
- Contrast ratio up to 1500:1;
- LED backlight, lifespan up to 50000 hours;
- Two HDMI ports
- Button to switch HDMI1 and HDMI2 signal input or display at the same time
- The power switch is used as a backlight control button
- The effective display size is 13.3 inches;



TPHD4K133A Datasheet

Order Code	Active Area(Inch)	Video Fomat	Resolution	Contrast	Color(Million)	View Angle
TPHD4K133A	13.6	HDMI 2.0	4K	1500:1	16.7	IPS Full View



Australian Distributor:

**Scientific Instrument and Optical Sales
Unit 1, 62 Bishop Street, Kelvin Grove. Qld. 4059**

Phone (07) 3356 0233 e-mail sales@sios.net.au