

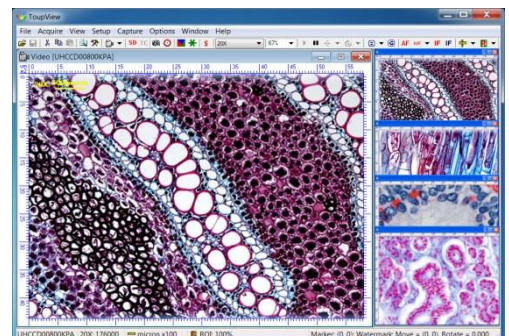
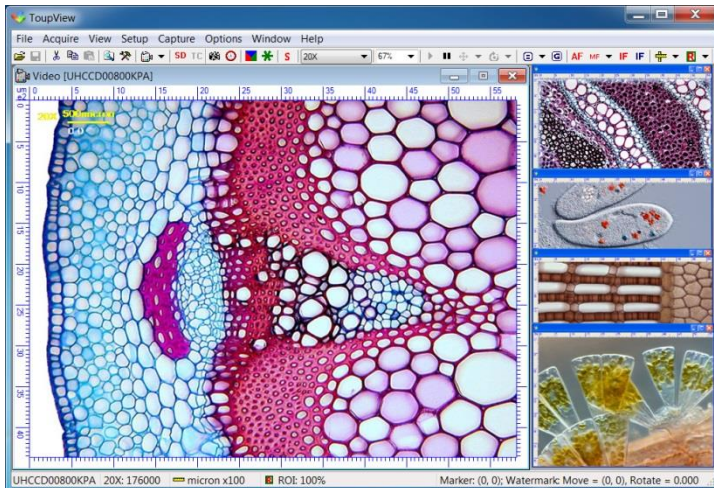
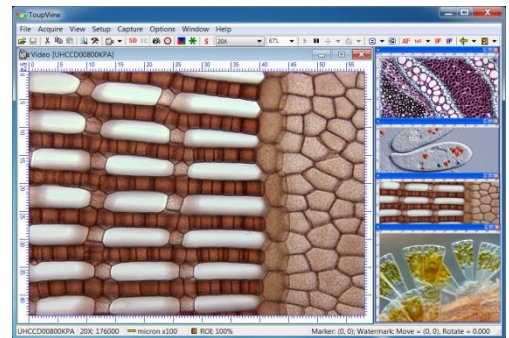
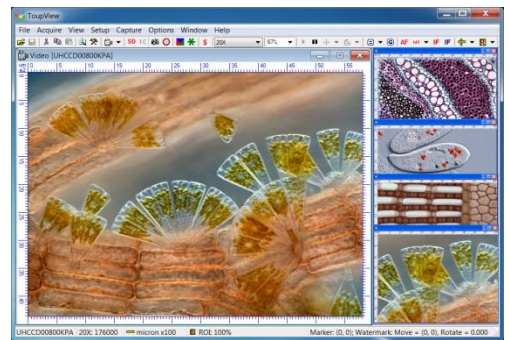
CCD Series Camera

SONY CCD SENSOR

USB2.0 | High Resolution | Perfect Color

USB2.0,
Ultra-Fine™ Color Engine

Ultra-Fine™



5.0MP USB2.0 P/N: TP705000A**HARDWARE CONFIGURATION**

Image Pickup Device	SONY ICX282AQ CCD(Color)
Scan Mode	Interlaced
Max. Resolution	2560 x 1920(Approx. 4,900,000 Pixels)
Sensor Size (Diagonal)	2/3" (Diagonal 11mm)
Pixel Size	3.40μm x 3.40μm
Imaging Area	9.74mm(H) x 7.96mm(V)
G Sensitivity	260mv with 1/30s Accumulation
Dynamic Range	70dB
A/D Converter	12-bit Parallel, 8-bit R.G.B to PC
SN Ratio	62dB
Spectral Range	380-650nm (with IR-cut Filter)
Video Format & Frame Rate	4.5fps @2560 x 1920, 9fps @1280 x 960 (Multiple Speed Level)
Binning	1 x 1, 2 x 2
Exposure	0.20ms~105ms, ROI Auto & Manual
White Balance	ROI White Balance/ Manual Temp Tint Adjustment
Color Rendering Technique	Ultra-Fine™ Color Engine
Peak Quantum Efficiency	N/A
Readout Noise	N/A
Extinction Ratio	N/A
Smear	N/A
Capture/Control API	Native C/C++, C#, DirectShow, Twain and Labview
Recording System	Still Picture and Movie
Cooling System*	Natural

OPERATING ENVIRONMENT

Operating Temperature(in Centidegree)	-10~ 50
Storage Temperature(in Centidegree)	-20~ 60
Operating Humidity	30~80%RH
Storage Humidity	10~60%RH
Power Supply	DC 5V over PC USB Port

SOFTWARE ENVIRONMENT

Operating System	Microsoft® Windows® XP / Vista / 7 / 8 (32 & 64 bit) OS X (Mac OS X) Linux
PC Requirements	CPU: Equal to Intel Core2 2.8GHz or Higher
	Memory:2GB or More
	USB Port:USB2.0 High-speed Port
	Display:17" or Larger
	CD-ROM

**Scientific Instrument & Optical Sales**

Unit 1 / 62 Bishop St., Kelvin Grove 4059

Ph. 07-3356 0233 fax 07-335 60344

e-mail sales@sios.net.au WWW.sios.net.au